

Premium Commercial Property for Lease in Kigali's CBD

Ideal for corporate headquarters
Innovation hubs | NGO | Embassies



Prime Location in Kigali's Core Commercial Zone

Strategically positioned within Kigali's central business and innovation corridor,

this property benefits from unmatched proximity to:

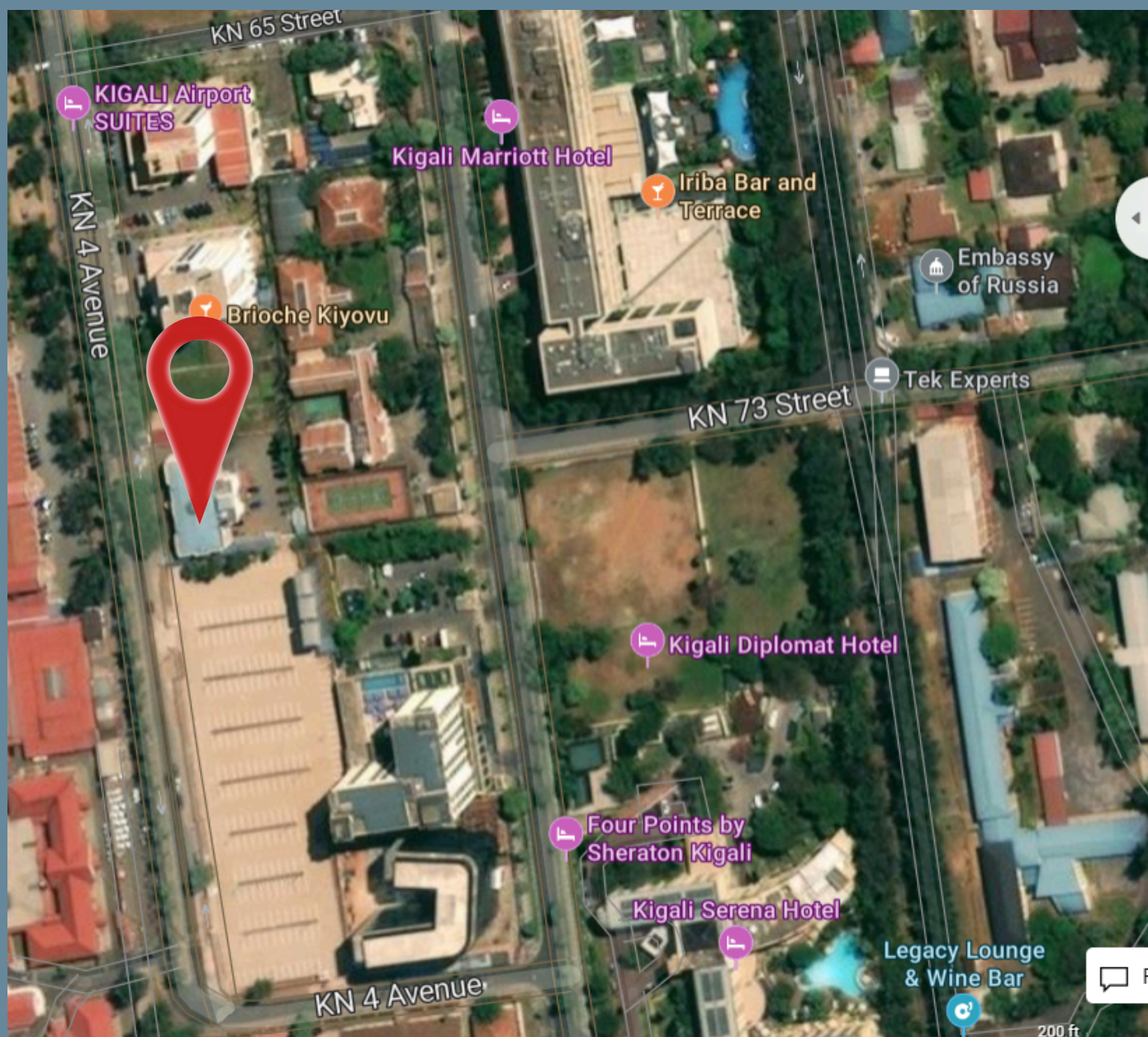
Four Points by Sheraton & Kigali Marriott Hotel — Prestigious hospitality neighbors

Norrskan Kigali — Africa's largest startup and innovation hub

University of Rwanda, College of Science and Technology — Just 300 meters away, a source of top local talent in design, architecture, and engineering

Major Embassies, Multinationals, Government Offices, and Cultural Institutions

This location places your organization at the center of Kigali's business, technology, and diplomatic ecosystem — ideal for visibility, connectivity, and collaboration.



Property Overview

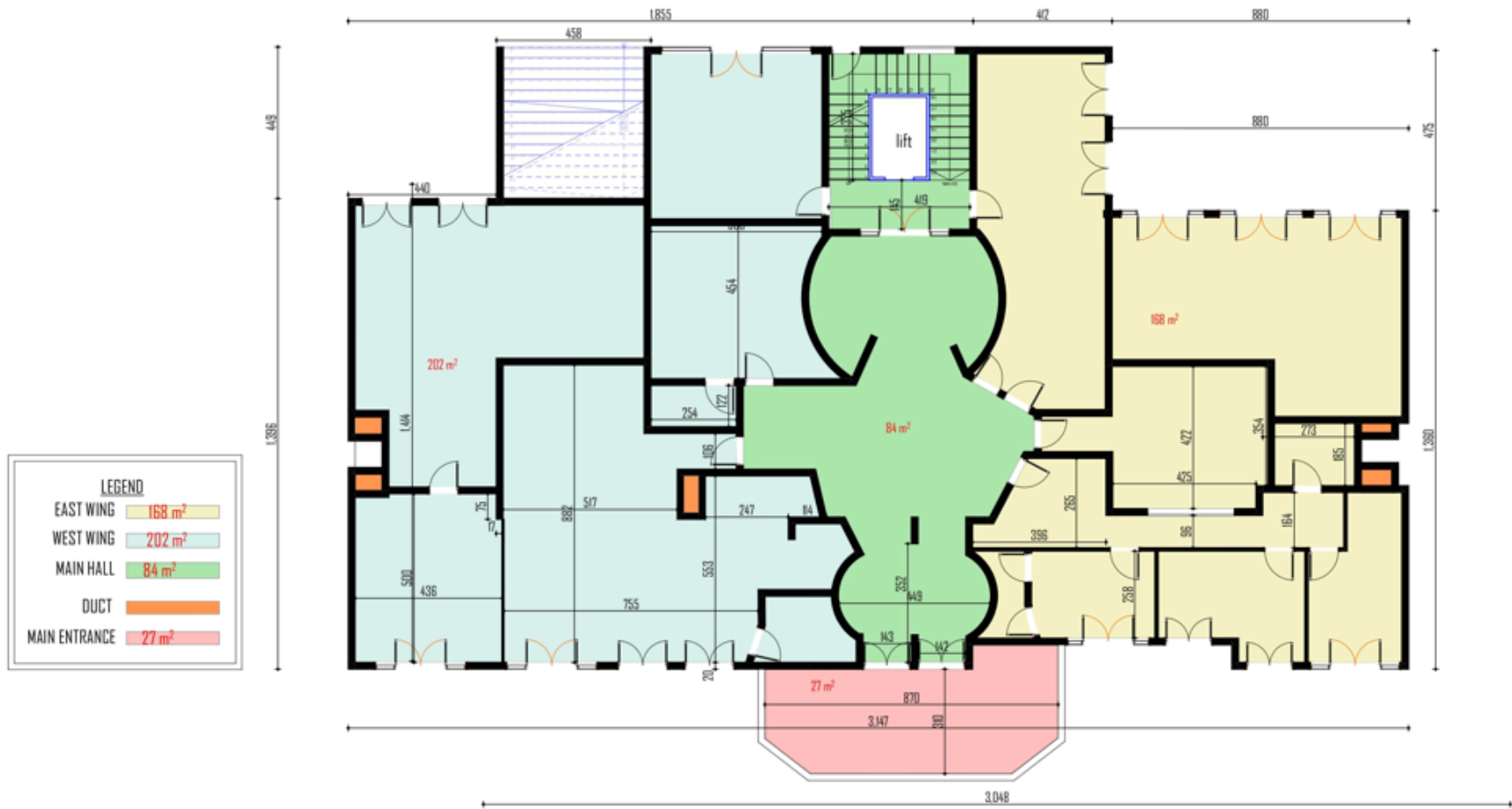
Total area: Over 1,895 SQM

- Basement (456 SQM): Storage, archives, or technical space
- Ground Floor (481 SQM): Showroom, reception, or offices
- First Floor (479 SQM): Workspaces or training areas
- Second Floor (479 SQM): Executive offices or accommodation
- Large parking lot with event or overflow capacity

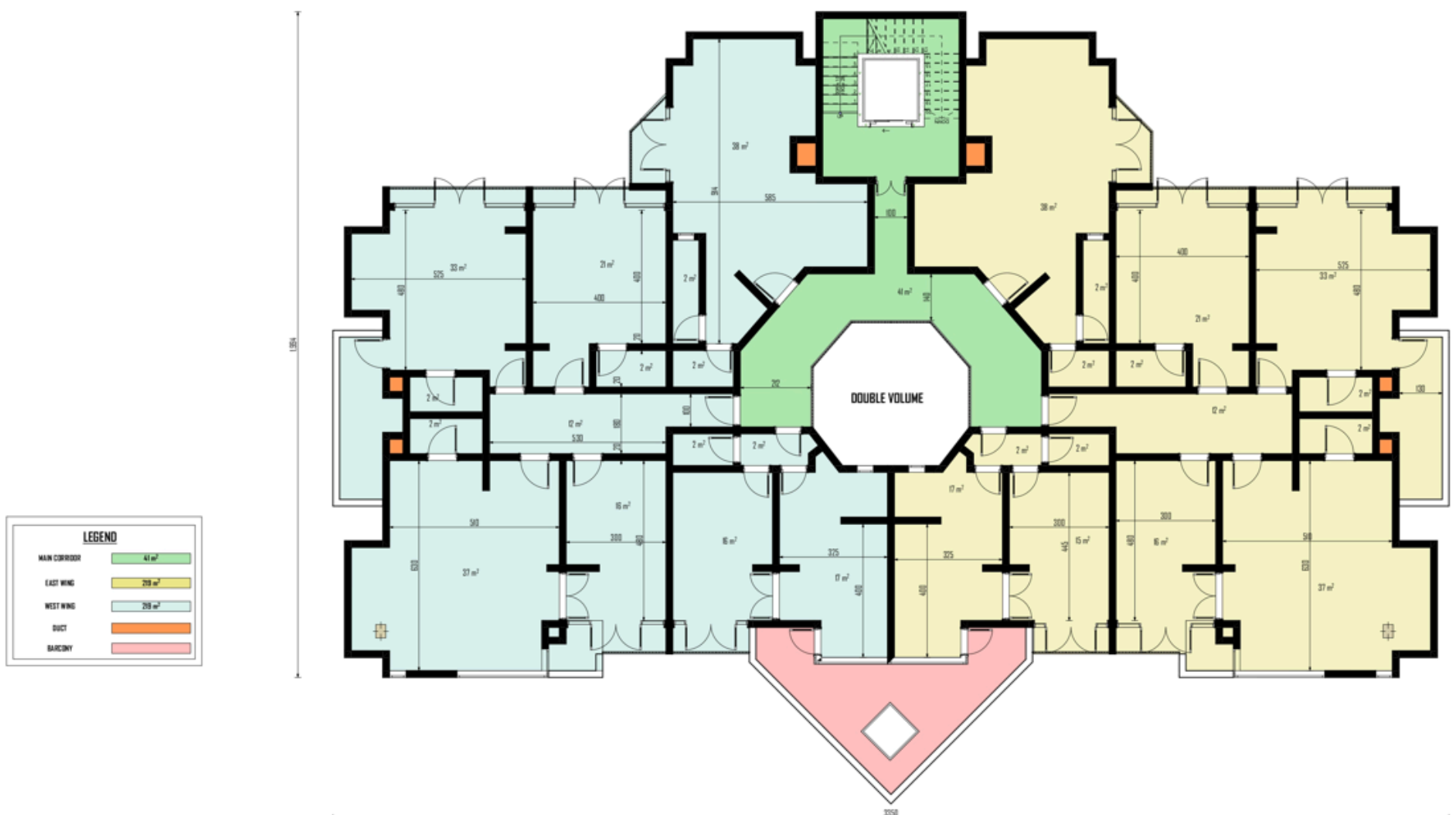
Basement plan



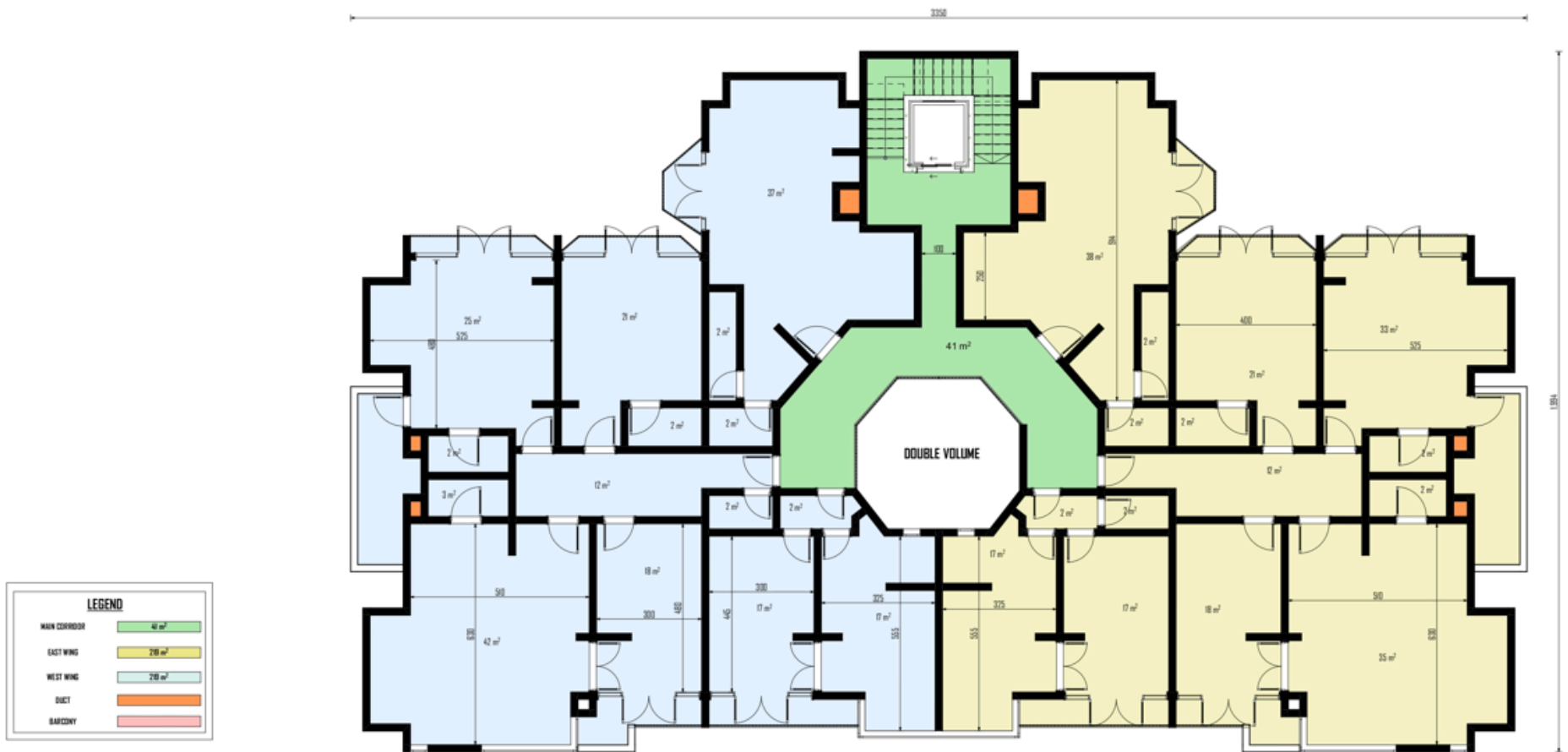
Ground floor plan



First floor plan



Second floor plan



1.

SECOND FLOOR

CONTACT US:

sales@misteph.com @

+250788329014 ☎

+250788329013 ☎

+250788329015 ☎



MISTEPH REALESTATE

COMMERCIAL & RESIDENTIAL PROPERTIES

www.misteph.com